

THIS INSTRUMENT PREPARED BY  
 RONNIE L. FURNISS  
 OF  
**CAULFIELD and WHEELER, INC.**  
 SURVEYORS - ENGINEERS - PLANNERS  
 7900 GLADES ROAD, SUITE 100  
 BOCA RATON, FLORIDA 33434 - (561)392-1991  
 CERTIFICATE OF AUTHORIZATION NO. LB3591  
 JANUARY 2021

# AVENIR SITE PLAN 3 - POD 8

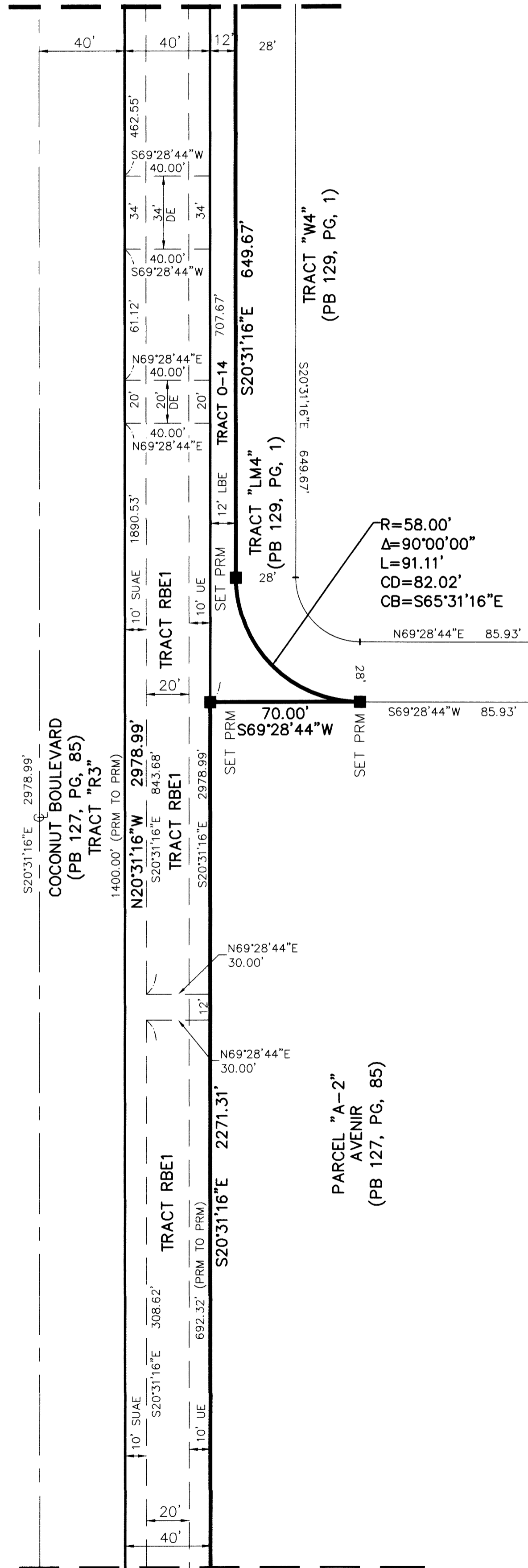
A PLANNED UNIT DEVELOPMENT BEING A REPLAT OF A PORTION OF AVENIR, PARCEL "A-2",  
 AS RECORDED IN PLAT BOOK 127, PAGES 85 THROUGH 109 OF THE PUBLIC RECORDS OF PALM BEACH COUNTY, FLORIDA,  
 LYING IN SECTIONS 10 AND 15, TOWNSHIP 42 SOUTH, RANGE 41 EAST,  
 CITY OF PALM BEACH GARDENS, PALM BEACH COUNTY, FLORIDA.

LEGEND/ABBREVIATIONS	
C	CENTERLINE
Δ	DELTA (CENTRAL ANGLE)
ACG	ACRES
CB	CHORD BEARING
CD	CHORD DISTANCE
DE	DRAINAGE EASEMENT
LA	LIMITED ACCESS EASEMENT
LB	LICENSED BUSINESS
LBE	LANDSCAPE BUFFER EASEMENT
LSF	LIFT STATION EASEMENT
O.R.B.	OFFICIAL RECORD BOOK
PB	PLAT BOOK
PG	PAGE
P.P.A.E.	PERPETUAL PUBLIC ACCESS EASEMENT
R	RADIUS
(R)	INDICATES RADIAL LINE
(RB)	INDICATES RADIAL BEARING
RBE	ROADWAY BUFFER EASEMENT
SF	SQUARE FEET
SUAE	SEACOAST UTILITY AUTHORITY EASEMENT
UE	UTILITY EASEMENT
PRM	DENOTES PERMANENT REFERENCE MONUMENT
5/8" IRON ROD WITH CAP STAMPED "C&W PRM LB 3591"	
●	DENOTES PERMANENT CONTROL POINT
✱	1/4 SECTION CORNER

129

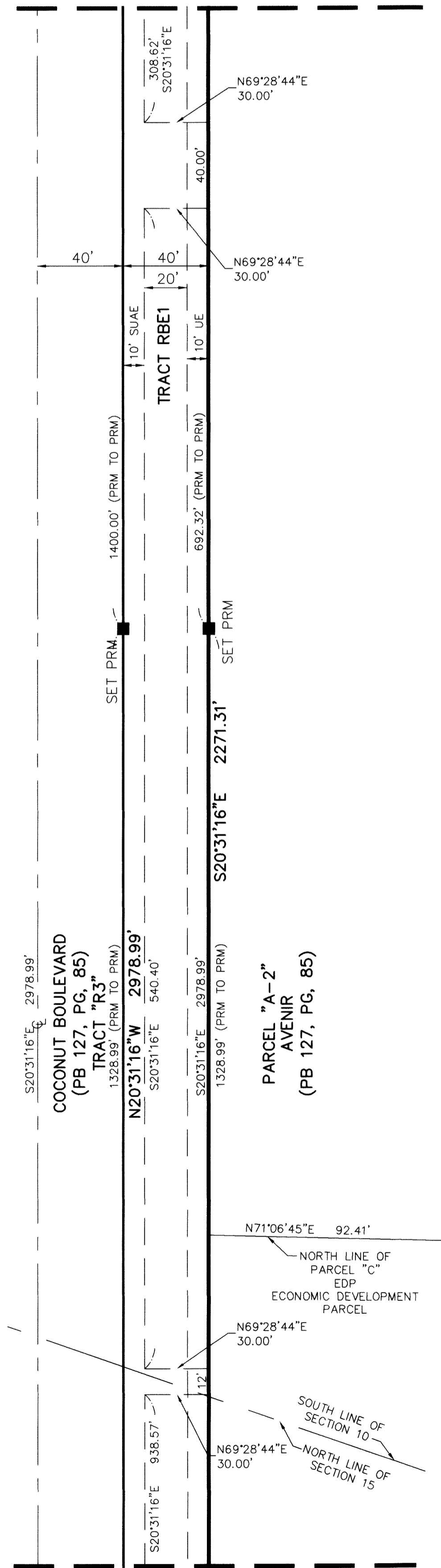
SHEET 6 OF 6

MATCH LINE SHEET 5



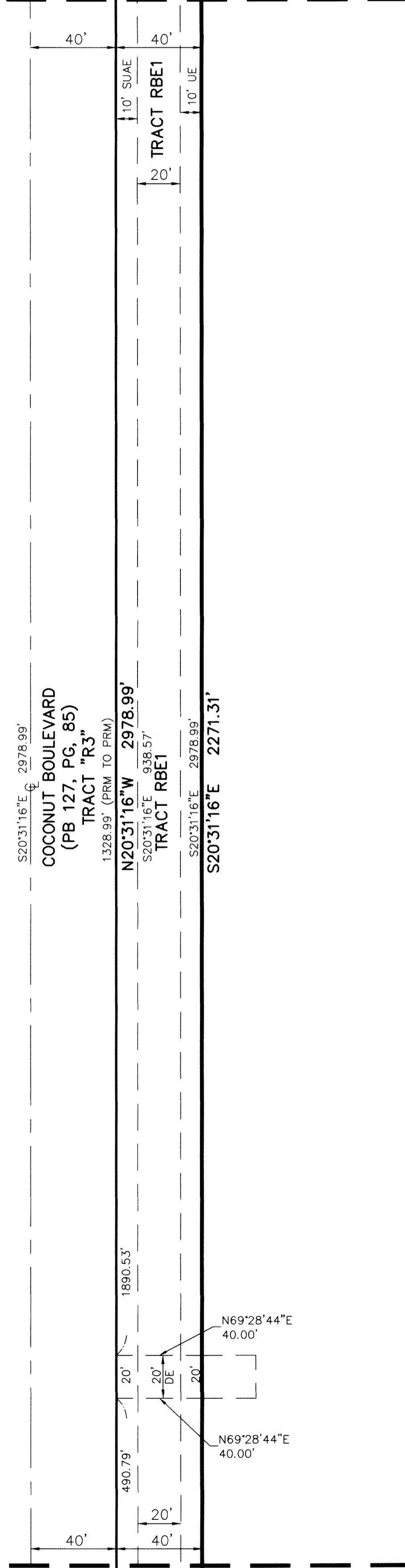
MATCH LINE SHEET "A"

MATCH LINE SHEET "A"



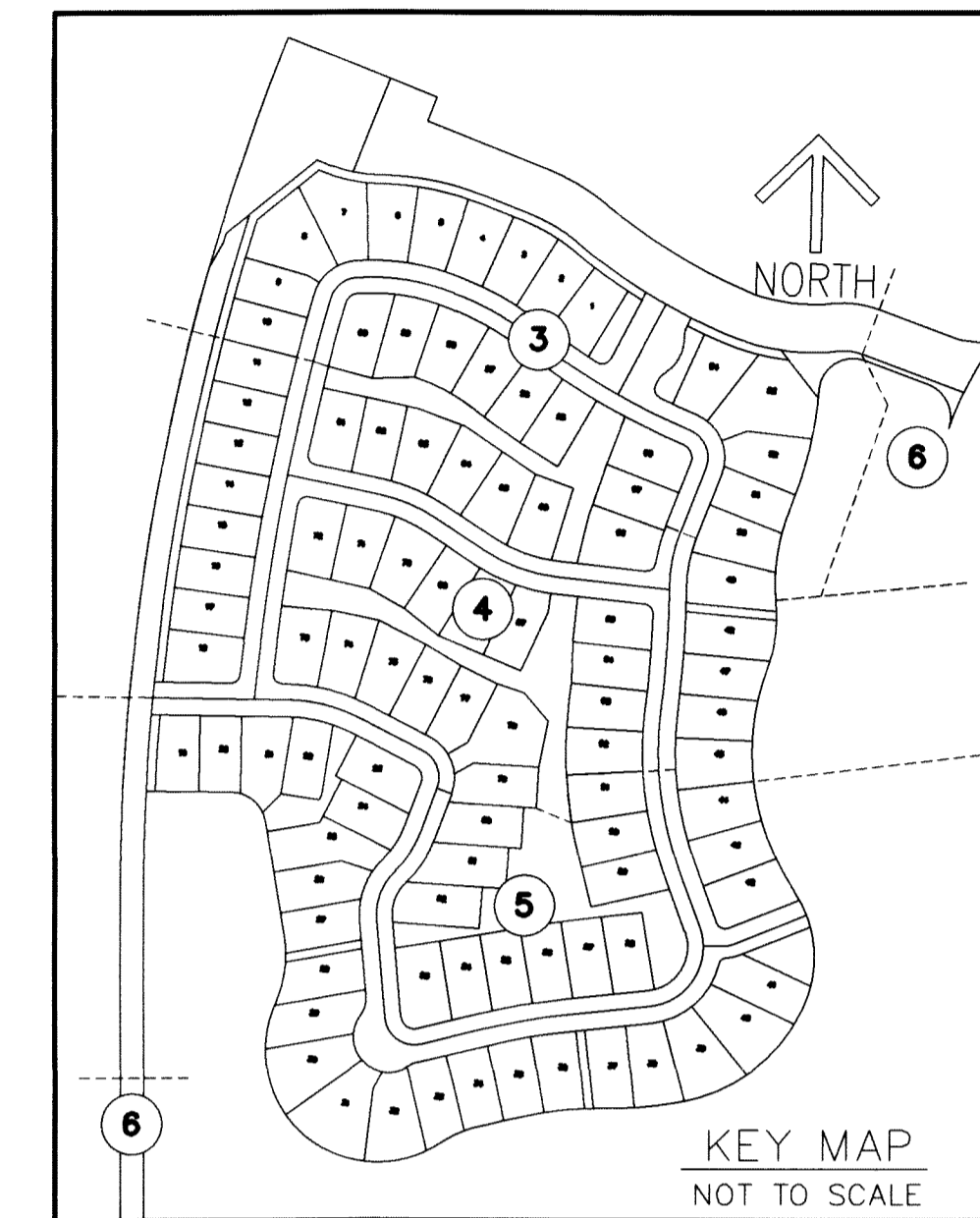
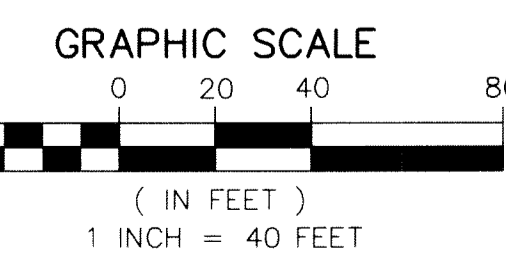
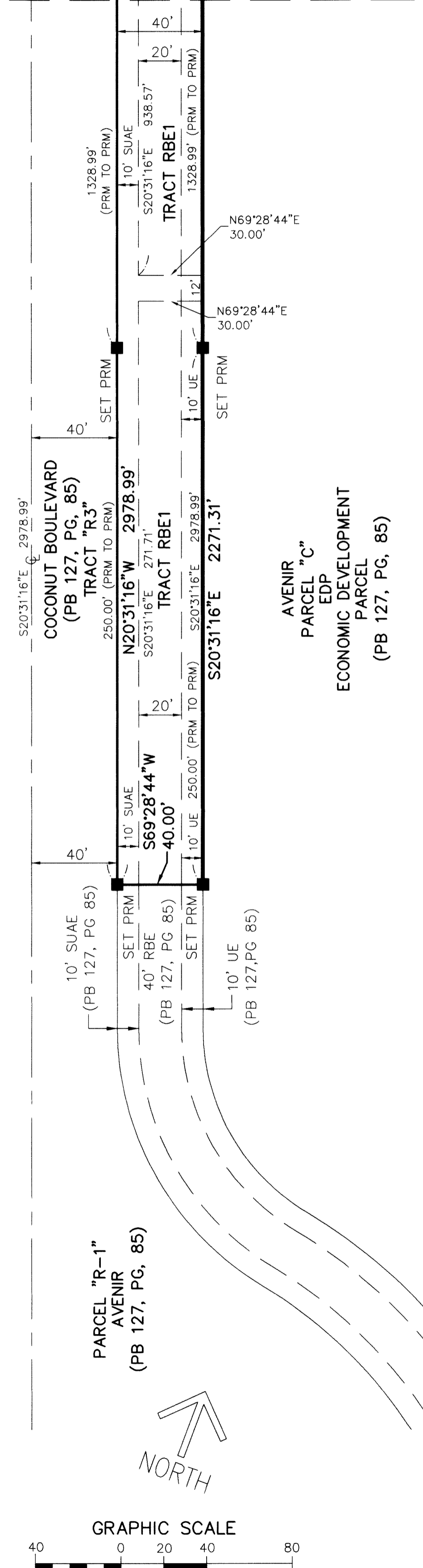
MATCH LINE SHEET "B"

MATCH LINE SHEET "B"



MATCH LINE SHEET "C"

MATCH LINE SHEET "C"



EASEMENT DETAIL SHEET 3

